

MONTHLY MEMBERSHIP PROGRESS REPORT

District 11 A2

Results as of: 6/30/2025

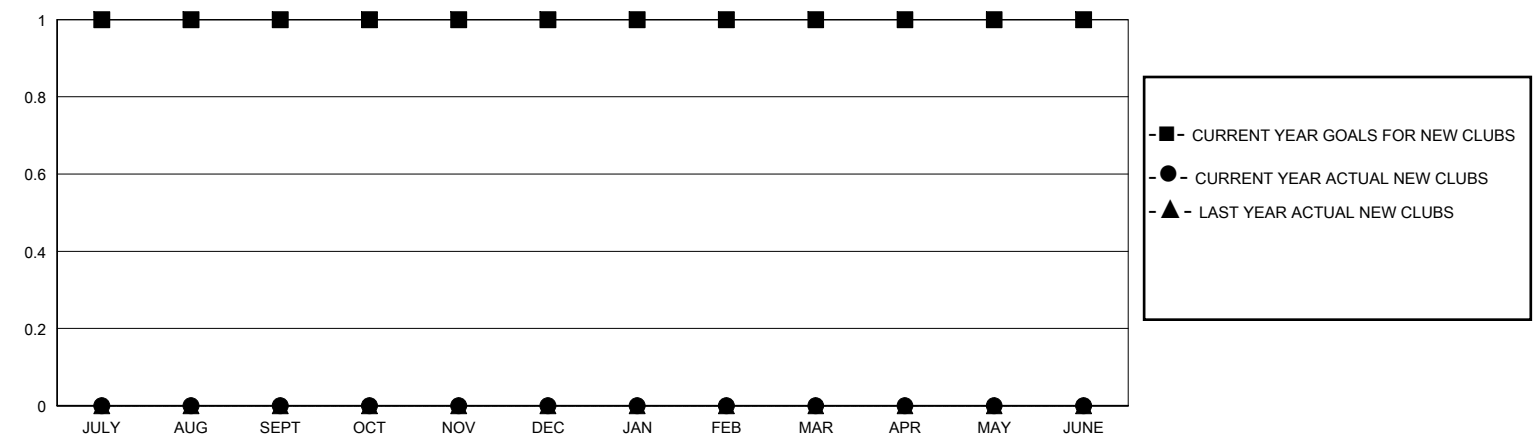
GMT:

LOCATION MICHIGAN

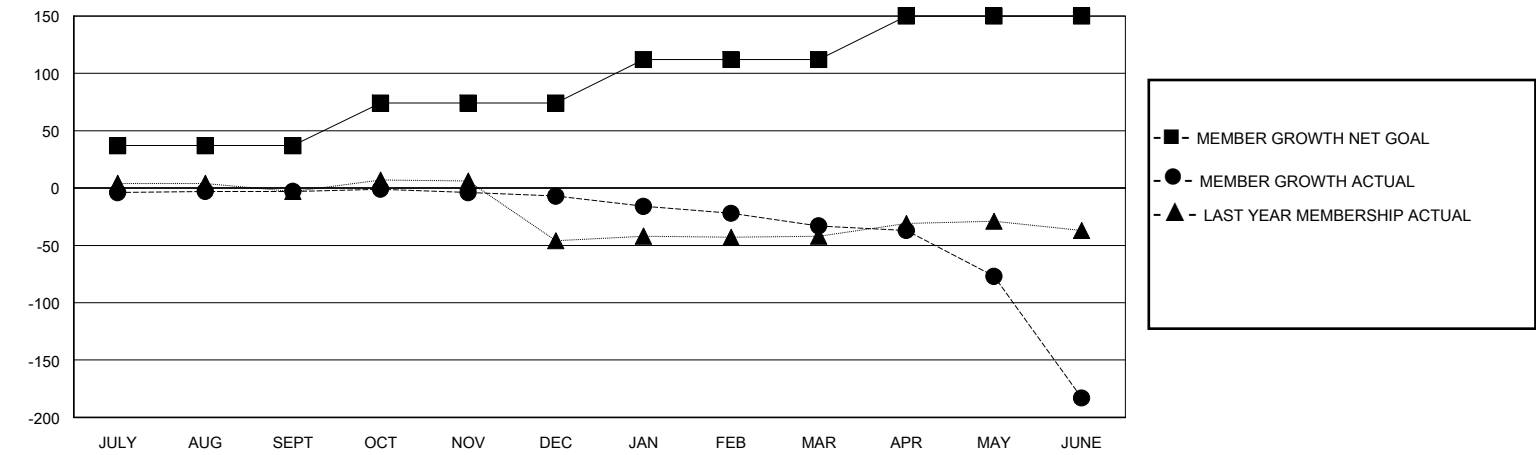
GMT CA

Clubs				Members			
RESULTS FOR 2024-2025				RESULTS FOR 2024-2025			
QUARTER	NEW CLUB GOAL	NEW CLUBS	DROPPED CLUBS	QUARTER	MEMBER GROWTH NET GOAL	MEMBER GROWTH ACTUAL	DROPPED MEMBERS ACTUAL (including transfers)
JULY/AUG/SEPT	1	0	0	JULY/AUG/SEPT	37	31	32
OCT/NOV/DEC	0	0	0	OCT/NOV/DEC	37	28	26
JAN/FEB/MAR	0	0	1	JAN/FEB/MAR	38	25	48
APR/MAY/JUNE	0	0	2	APR/MAY/JUNE	38	50	163

GOALS AND ACTUAL NEW CLUBS CUMULATIVE



GOALS AND ACTUAL MEMBERS CUMULATIVE



DROPPED CLUBS: 3		18 CLUBS OF 31 ADDED 1 OR MORE NEW MEMBERS	<u>GENDER DISTRIBUTION</u>	
			MALE	665 (60.95%)
			FEMALE	426 (39.05%)
<u>DROPPED MEMBERS</u>		CLICK HERE FOR CUMULATIVE MEMBERSHIP DATA		
DECEASED 21			TOTAL FAMILY UNIT MEMBERS 190	
CLUB CANCELLED 31				
OTHER 216			FAMILY MEMBERS PAYING HALF DUES 98	
TOTAL 268				